

## Specifications of ApeosPort-IV C7780 / C6680 / C5580 Series

### Copy Function

	ApeosPort-IV C7780	ApeosPort-IV C6680	ApeosPort-IV C5580
Type	Console type		
Memory	2 GB		
HDD	160 GB		
Colour Capability	Full Colour		
Scanning Resolution	600 x 600 dpi		
Warm-up Time	90 sec or less (at room temperature 20°C)		
Original Paper Size	<b>Max:</b> 297 x 432 mm (A3, 11 x 17") for both sheet and book originals		
Output Paper Size	<b>Max:</b> SRA3 (320 x 450 mm), 13 x 18" 330.2 x 457.2 mm For Bypass Tray: 13 x 19.2" 330.2 x 488 mm <b>Min:</b> A5 For Bypass Tray: Postcard (100 x 148 mm) and envelope (120 x 235 mm)		
Output Paper Weight <sup>1</sup>	<b>Tray:</b> 64 - 220 gsm, <b>Bypass Tray:</b> 64 - 300 gsm		
First Copy Output Time	<b>BW:</b> 4.1 sec or less (A4 LEF in Black & White preference mode) <b>Colour:</b> 6.5 sec or less (A4 LEF in Colour preference mode)		
Continuous Copy Speed (In Simplex and Duplex)	75 ppm <BW>	65 ppm <BW>	55 ppm <BW>
	70 ppm <Colour>	60 ppm <Colour>	50 ppm <Colour>
Paper Tray Capacity	<b>Standard:</b> 3,260 sheets Tray 1 & 2: 500 sheets, Tray 3: 870 sheets, Tray 4: 1,140 sheets, Bypass Tray: 250 sheets <b>Optional:</b> High Capacity Feeder: 2,000 sheets <b>Maximum:</b> 5,260 sheets (when optional A4 High Capacity Feeder (HCF2) or Oversized High Capacity Feeder (HCF B1-S) is equipped)		
Output Tray Capacity	500 sheets (Offset Catch Tray)		
Power Supply	AC220-240V±10%, 10A (Single power source), 50/60Hz AC110±10%, 11A+9A (Dual power source), 50/60Hz		
Power Consumption	2.4kW or less (AC220-240) / 2.2kW or less (110V) <b>Sleep Mode:</b> 1.5W or less, <b>Low Power Mode:</b> 104W, <b>Standby Mode:</b> 192W		
Dimensions	W 700 x D 804 x H 1,154 mm		
Machine Weight	247 kg		

<sup>1</sup> Performance may vary for heavyweight, coated and special stocks.

### Print Function

Type	Built-in type		
Continuous Print Speed (In Simplex and Duplex)	75 ppm <BW>	65 ppm <BW>	55 ppm <BW>
	70 ppm <Colour>	60 ppm <Colour>	50 ppm <Colour>
Print Resolution	2,400 x 2,400 dpi		
PDL	<b>Standard:</b> PCL6, PCL5, <b>Optional:</b> Adobe® PostScript® 3TM		
Operating System	<b>Standard:</b> Windows® 2000, Windows® XP, Windows Server® 2003, Windows Server® 2008-86, Windows Vista®, Windows® 7, Windows® XP Professional x64, Windows Server® 2003-64, Windows Server® 2008-64, Windows Vista® x64, Windows® 7 x64, Windows Server® 2008 R2 x64, Mac OS 10.5-10.6 <b>Optional:</b> Windows® 2000, Windows® XP, Windows Server® 2003, Windows Server® 2008-86, Windows Vista®, Windows® 7, Windows® XP Professional x64, Windows Server® 2003-64, Windows Server® 2008-64, Windows Vista® x64, Windows® 7 x64, Windows Server® 2008 R2-64, Mac OS 9.2.2, Mac OS X 10.3.9-10.4.11 (except 10.4.7), Mac OS X 10.5-10.6		
Connectivity	<b>Standard:</b> Ethernet 100BASE-TX/10BASE-T, USB2.0 <b>Optional:</b> 1000BASE-T <sup>2</sup>		

<sup>2</sup> When this option is equipped, Ethernet 100BASE-TX/10BASE-T will not be available.

### Scan Function

Type	Colour Scanner		
Scanning Speed	<b>BW:</b> 100 ppm, <b>Colour:</b> 100 ppm <b>One-Pass Duplex Scanning:</b> 200 ipm		
Scanning Resolution	600 x 600 dpi, 400 x 400 dpi, 300 x 300 dpi, 200 x 200 dpi		
Connectivity	Ethernet 100BASE-TX/10BASE-T/1000BASE-T (Option)		
Scan Destinations	Scan to Folder, Scan to PC/Server (using FTP/SMB protocol), Scan to Email, Scan to Home, Scan to USB		

### Fax Function (Optional)

Send Document Size	<b>Max:</b> A3, 11 x 17", Long documents (Max: 600 mm)		
Transmission Time	Less than 3 seconds		
Transmission Mode	ITU-T G3		
No. of Fax Lines	PBX, PSTN, Maximum 2 ports G3-3 port		

### Duplex Automatic Document Feeder

Capacity	250 sheets		
Original Paper Size	<b>Max:</b> A3, 11 x 17", <b>Min:</b> A5		
Output Paper Weight	38 - 200 gsm (Duplex: 50 - 200gsm)		
Feeding Speed (A4 LEF Simplex)	<b>BW:</b> 80 DPM, <b>Colour:</b> 75 DPM		

Descriptions in this material, product specifications and / or appearances are subject to change without prior notice due to improvements. Please note that the product colour appears differently from the actual colour as a result of properties of papers or printing ink. Windows and Windows NT are registered trademarks of Microsoft Corporation. NetWare is a registered trademark of Novell, Inc. in the United States. Macintosh, Mac OS and Ether Talk are trademarks of Apple Computer, Inc. PostScript is a registered trademark of Adobe Systems Incorporated in each country. HP-GL is a registered trademark of Hewlett-Packard Company. Other company names or product names are registered trademarks or trademarks of each company.

Spare for the standard configuration of installed machines is supported for up to 7 years from the date of the end of machine production.

For more information or detailed product specifications,

call or visit us at  
**Fuji Xerox Singapore Pte Ltd**  
 80 Anson Road, #01-01  
 Fuji Xerox Tower Singapore 079907  
 Tel: 6766 8888

<http://www.fujixerox.com.sg>

XEROX®, and the sphere of connectivity design are trademarks or registered trademarks of Xerox Corporation, in the U.S. and/or other countries. DocuCentre is a trademark or registered trademark of Fuji Xerox Co., Ltd. Other trademarks are the property of their respective owners.

### Advanced Finisher (or Finisher C2 with Booklet Maker)<sup>3</sup> (Optional)

	ApeosPort-IV C7780	ApeosPort-IV C6680	ApeosPort-IV C5580
Paper Size / Paper Weight	<b>Output Tray:</b> Max 13 x 19", 12.6 x 19.2" (320 x 488mm), Min: Postcard (100 x 148mm), 64 to 300 gsm <b>Finisher Tray:</b> Max: 13 x 19", 12.6 x 19.2" (320 x 488 mm), Min: B5 LEF, 64 to 220 gsm <b>Booklet Tray:</b> Max: 13 x 18", Min: A4, Letter (8.5 x 11"), 64 to 220 gsm		
Stacker Capacity	<b>Output Tray:</b> 500 sheets (A4) <b>Finisher Tray:</b> No Stapling: A4: 1,500 sheets, B4 or larger: 1,500 sheets, Mixed Stack: 300 sheets <b>Stapling:</b> A4: 200 copies or 1,500 sheets B4 or larger: 100 copies or 1,500 sheets <b>Booklet Tray:</b> 20 copies		
<b>Staple</b>			
Capacity	50 sheets (Max 90 gsm)		
Paper Size	Max: A3, 11 x 17", Min: B5 LEF		
Position	1 position (Front, Rear / Corner), 2 positions (Parallel)		
<b>Punch</b>			
Paper Size	A3, 11 x 17", B4, A4, A4 LEF, Letter (8.5 x 11"), Letter (8.5 x 11") LEF, B5 LEF		
Number of Holes	2 / 4 holes (Option US 2 / 3 holes)		
Paper Weight	64 to 200 gsm		
<b>Booklet Finishing</b>			
Capacity	Booklet: 15 sheets, Bi-Fold: 5 sheets		
Paper Size	<b>Max:</b> 13 x 18", <b>Min:</b> A4, Letter (8.5 x 11")		
Paper Weight	Booklet: 64 - 220 gsm, Bi-Fold: 64 - 220 gsm		
<b>Dimensions/Weight</b>	W 921 x D 650 x H 1,010 mm, 86 kg		

<sup>3</sup> Advanced Finisher (or Finisher C2) without Booklet Maker is also available with stacker capacity up to 3,000 A4 sheets.

### Professional Finisher (or Finisher D2 with Booklet Maker) (Optional)

Paper Size / Paper Weight	<b>Output Tray:</b> Max 13 x 19", 12.6 x 19.2" (320 x 488 mm), Min: Postcard (100 x 148 mm), 64 to 300 gsm <b>Finisher Tray:</b> Max: 13 x 19", 12.6 x 19.2" (320 x 488 mm), Min: B5 LEF, 64 to 300 gsm <b>Booklet Tray:</b> Max: 13 x 18", Min: A4, Letter (8.5 x 11"), 64 to 300 gsm		
Stacker Capacity	<b>Output Tray:</b> 500 sheets (A4) <b>Finisher Tray:</b> No Stapling: A4: 2,000 sheets, B4 or Larger: 1,500 sheets Mixed Stack: 300 sheets <b>Stapling:</b> A4: 200 sets or 2,000 sheets, B4 or Larger: 100 sets or 1,500 sheets <b>Booklet Tray:</b> 20 sets		
<b>Staple</b>			
Capacity	100 sheets (64 - 300 gsm)		
Paper Size	<b>Max:</b> A3, 11 x 17" <b>Min:</b> B5 LEF		
Position	Single (Front/Corner, Center/Parallel, Back/Parallel, Corner), Dual (Parallel)		
<b>Punch</b>			
Paper Size	A3, 11 x 17", B4, A4, A4 LEF, Letter (8.5 x 11"), Letter (8.5 x 11") LEF, B5 LEF		
Number of Holes	2 / 4 holes (Option US 2 / 3 holes)		
Paper Weight	64 to 220 gsm		
<b>Booklet Finishing</b>			
Capacity	Booklet: 20 sheets, Bi-Fold: 5 sheets		
Paper Size	<b>Max:</b> 13 x 18", <b>Min:</b> A4, Letter (8.5 x 11")		
Paper Weight	Booklet: 64 - 300 gsm, Bi-Fold: 64 - 300 gsm		
<b>Folding</b>			
Z-Fold	Paper size: A3, 11 x 17", B4, Paper Weight: 64 - 90 gsm		
Tri-Fold	Paper size: A4, Letter (8.5 x 11"), Paper Weight: 64 - 90 gsm		
<b>Interposer</b>			
Capacity	200 sheets		
Paper Size	<b>Max:</b> A3, 11 x 17" <b>Min:</b> B5 LEF		
Paper Weight	64 - 220 gsm		
<b>Dimensions / Weight</b>	W 1,050 x D 725 x H 1,165mm, 135 kg With D2 Folder Unit: W 1,250 x D 725 x H 1,165mm, 175 kg		

<sup>4</sup> D2 Folder Unit (Optional) is required.

### A4 High Capacity Feeder (HCF2) (Optional)

Paper Size / Paper Weight	A4 LEF, Letter (8.5 x 11") LEF, B5 LEF, 64 - 220 gsm		
Capacity	2,000 sheets		
Dimensions / Weight	W 389 x D 610 x H 377 mm, 29 kg		

### Oversized High Capacity Feeder (HCF B1-S) (Optional)

Paper Size / Paper Weight	Postcard (100 x 148 mm), B5, B5 LEF, 8 x 10" LEF, Letter (8.5 x 11") Letter (8.5 x 11") LEF, A4, A4 LEF, 8.5 x 13", Legal (8.5 x 14"), B4, A3, 11 x 17", 12 x 18", 12.6 x 17.7", 12.6 x 19.2", 13 x 18", 13 x 19", 64 to 300 gsm		
Capacity	2,000 sheets		
Dimensions / Weight	W 700 x D 804 x H 1154 mm, 160 kg		



**Reproduction Prohibitions** Please note that reproduction of the following is prohibited by law: Domestic and overseas bank notes and coins, government-issued securities, national bonds and local bond certificates. Unused postage stamps and post cards. Certificate stamps stipulated by law. The reproduction of works for copyright purposes (literary works, musical works, paintings, engravings, maps, cinematographic works, photographic works, etc.) is prohibited except when they are reproduced personally, at home or within limited range according to the above. This product is equipped with an anti-counterfeit feature. This feature is not intended to prevent illegal reproduction. Be extremely careful about the management of equipment used.

**For Your Safe Use**  
 Before using the product, read the Instruction Manual carefully for proper use.  
 Use the product with an appropriate adequate power source and voltage displayed. Be sure to establish a ground.  
 In the case of a failure or short circuit, an electric shock may result.

**FUJI XEROX**

**ApeosPort-IV**  
 C7780  
 C6680  
 C5580

**FUJI XEROX**

**ApeosPort-IV C7780 / C6680 / C5580**  
 Digital Colour Multifunction Device  
 Exceptionally efficient. Extra secure.  
 Extremely easy.



# Productive, easier to use and secure

The ApeosPort-IV C7780 / C6680 / C5580 multifunction devices thrive in **document-intensive office environments** where the workloads are demanding, security's a must, and ease-of-use and ease-of-management truly matter.

The ApeosPort-IV C7780 / C6680 / C5580 series features an open architecture technology that enables personalised and customised document management solutions you can access right from the device's touch screen. These applications can leverage on your existing infrastructure and databases, and meet your specific business challenges.

## Performance to increase productivity

- Up to 75 ppm copy and print speeds. Enhance office productivity with full colour at a speedy 70 ppm!
- Fast scanning up to 100 ppm (duplex scanning: 200 ipm). Your department can swiftly scan, retrieve, electronically store and distribute documents.
- Exceptional media flexibility. Supporting a wider range of media types and weight from more trays than most devices in its class. It supports up to 300 gsm and media sizes up to SRA3.
- Multiple users can simultaneously perform different tasks at the device – scan, copy, print, transmit faxes and manage the queue – a helpful feature in maximising business efficiency.
- A wide range of finishing options are available. Short production runs can be efficiently handled in-house, saving time and money.



# Extending your capabilities with Apeos Solutions

**Apeos iiX (Apeos Internet Integration based on XML and SOAP)** is the platform delivering integrated office solutions and provides additional capability to enhance your Enterprise productivity, security, streamline processes and reduce costs. Capabilities include: Cost Recovery, Secure Device Authentication via Card ID, Document Security Solutions and much more.

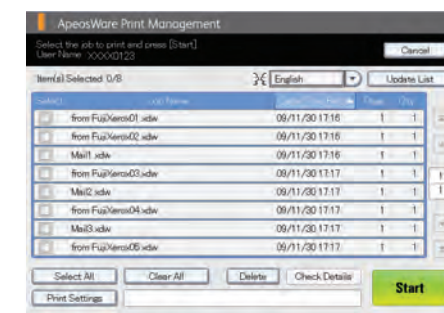
**Leveraging Fuji Xerox consultancy expertise for greater ROI.** To maximise your ApeosPort investment, leverage on Fuji Xerox's comprehensive consultancy expertise to customise the web services available through the Web Browser on your ApeosPort.

Depending on the complexity of your environment and business needs, Fuji Xerox provides document consulting, system design, development and project management services to



assist you with your integration or customisation requirements. Your ApeosPort's web browser can be re-designed to display the same "look-and-feel" as your business application. Enjoy true customisation with the flexibility to add company logo, change colours and integrate unique workflows.

**Effectively manage printing costs in your office.** By seamlessly integrating with Fuji Xerox multifunction devices (MFD's), Equitrac Office® print management solution allows you to track, analyse and allocate costs of



printouts sent to a networked printer, copier or MFD.

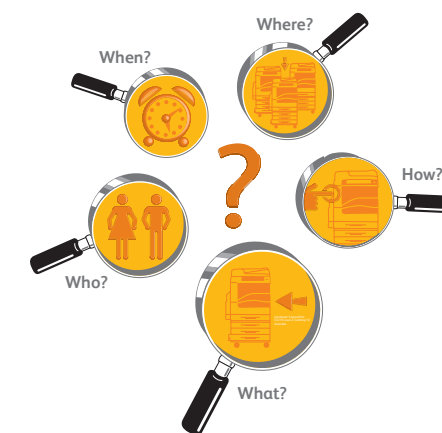
The Follow-You Printing with Secure Document release increases mobility and productivity by allowing your staff to output documents at any networked printer within your office. It enables a secure access by entering a user ID or swiping a card before getting their documents. This means that users can avoid being on guard while waiting for their printouts - letting them make better use of their billable time.

An extensive reporting capability enables traceability of costs within workgroups. It also provides information on which devices are heavily used and breaks down often so you can make informed decisions on deploying your office equipment.

## Document security is priority.

Fuji Xerox introduces a solution that empowers you with top security for all your electronic and paper documents. The new ApeosWare Image Log Service (AWILS) Document Security Solution lets you monitor and track any document once it is copied, printed, faxed or scanned.

All documents that are copied, printed, faxed or scanned, are automatically saved as images by ApeosPort. Next, these captured images are seamlessly transferred to a core server with "OCR" technology, and are indexed and stored according to their job information. Should a leak occur, you can trace and locate the disclosed documents as well as the source of the leak including who, where, when, which and how, by performing keywords or content searches of the stored images on the core server. Investigative work that was once tedious and time-consuming now becomes swift and effortless!



# Easily manage Fuji Xerox devices

**Proactively manage printing fleets** and control colour usage and costs with Fuji Xerox management tools.

**CentreWare™ Internet Services** software makes it easy for administrators to configure the device, upload address books, monitor usage and consumables remotely and establish auditing capabilities.



**Manage colour printing to minimise costs.** Control costs by nominating when colour could be used and by whom. This ensures that colour is available to those individuals who truly leverage on its power - such as the sales teams and marketing department.

**Driverless printing for remote users** with CentreWare Internet Services web utility. Any connected computer can immediately output PDF, TIFF and PRN files from any network computer, without using a print driver at all.

**Device Setup Tool** allows for simplified device configuration and administration, and lets you easily clone configurations to other similar devices on the network.

## Fuji Xerox Accounting Solutions

Available as standard features on Fuji Xerox multifunction devices. Use them to monitor not only the document pages your office produces but also who produced them. Once you know where your costs are coming from, you can take control of them.

**Auditron.** Sets limits of device features for analysis and billing purposes.

**Xerox Standard Accounting.** Provides reports for greater cost control to track and limit the number of copy, print, network scanning, email and fax jobs for each user.

**Network Accounting.** Ideal for larger enterprises. Provides extensive accounting information level for copies, prints and scans using integrated solutions available from Fuji Xerox.

### Key Features

- Set a quota on the number of print, copy, scan and fax jobs that a user can perform. Quotas can be reset remotely at any time
- Account for device activity down to the user, group or departmental level
- Manage a user's access to colour for both copy and print jobs
- Bill usage to internal departments or external clients

## Convenient, walk-up operation

**Large 10.4-inch, colour user interface\*** features bright, intuitive icons and easy access to all major functions directly from the home screen.

\* Optional



For easy document viewing, colour thumbnails and up-close previews can be shown on the device touch screen.

**The entire panel can be tilted** making it accessible to just about anyone.

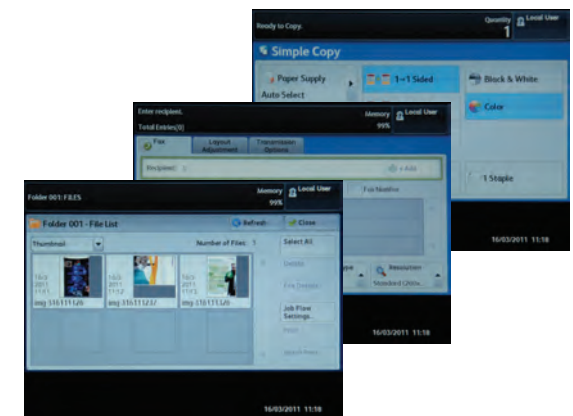
## Take colour to a whole new level

The ApeosPort-IV C7780 / C6680 / C5580 series with advanced VCSEL technology, helps you create professional-looking documents at the touch of a button.

**High-resolution output, highly impactful documents.** With 2400 x 2400 dpi, photo-quality colour images and rich, crisp text, your output always makes a huge impact.

**Always accurate image quality.** The ApeosPort-IV C7780 / C6680 / C5580 series employ advanced print heads with Digital Image Registration Control Technology, which ensures consistently outstanding image registration.

**Impressive results.** Print brilliant, attention-grabbing images on a variety of stock as large as SRA3 and on paper weights up to 300 gsm, and take advantage of impressive finishing capabilities from saddle-stitch booklets to folded brochures.



# Build your solution today and expand it tomorrow as your business grows



**Flexible document handling.**  
The 250-sheet capacity, single pass duplex document feeder allows both sides of a document to be scanned simultaneously at up to an incredible 200 images per minute for exceptional productivity.

**Feeding options.** Add on as your productivity and media handling needs increase.

The 2,000 sheet **A4 High Capacity Feeder** is perfect for long run reports, presentations or mailers.

The **Oversized High Capacity Feeder** supports up to 300 gsm stock and enables SRA3 full bleed applications.

# Security at all points

How much would it cost your business if the security of critical, sensitive information became compromised? Are you at risk?



**Safeguard your information**  
The ApeosPort-IV C7780 / C6680 / C5580 multifunction devices incorporate some of the strongest security features in the industry, ensuring that your document production workflow, often overlooked in security checks, is well-protected.

## Document

**Secure print** helps keep documents private by holding print jobs in the queue until the user enters the password.

**Password protected PDFs** require a password to open and view a sensitive scan.

## Hard Drive

**Data Security Kit** provides the following security features:



## Device

**Network Authentication** restricts access to device features and management settings by validating user names and passwords.

## Network

**IEEE 802.1X protocol** helps ensure devices connected to the network are properly authenticated.



**IPv6 support** opens up additional IP addressing opportunities across the Internet and inside enterprise firewalls. IPv6 provides additional network security, better network routing and configuration, and improved support for high volume printing and larger print jobs.

# Colour: in-house and under control

Add the impact of colour and take advantage of tools that let you choose when, where and how much colour your business needs.

The printing world is exploding with new applications and new ways to use colour, media and finishing. The superb image quality, robust media latitude, and flexible finishing options of the ApeosPort-IV C7780 / C6680 / C5580 series, make it the perfect device for capturing new business and keeping more applications in-house.

**Nothing gets noticed like colour.** 2,400 x 2,400 dpi output resolution with 256 halftones gives your documents unmatched clarity and impact.

**EA-Eco toner** delivers a professional glossy finish on documents where impact is the key.

**Regulate access to colour to control costs.** Allocate colour-page limits by user, department, etc.

**Built-in reporting functions let you track all services** — print, copy, scan, fax and email, as well as colour printing and copying – making usage decisions easier in the future.



**Professional finishing options.** Create professional presentations and attractive manuals or proposals. The range of optional finishers gives you efficient, print-on-demand versatility. These high performance finishers feature automatic stapling, hole-punching, folding and booklet making.

## Green: Inside and outside the box

### Low energy consumption

The ApeosPort-IV C7780/ C6680/ C5580 series consumes less power in standby, low power and operating modes, resulting in greater energy savings in the office.

### Green paper

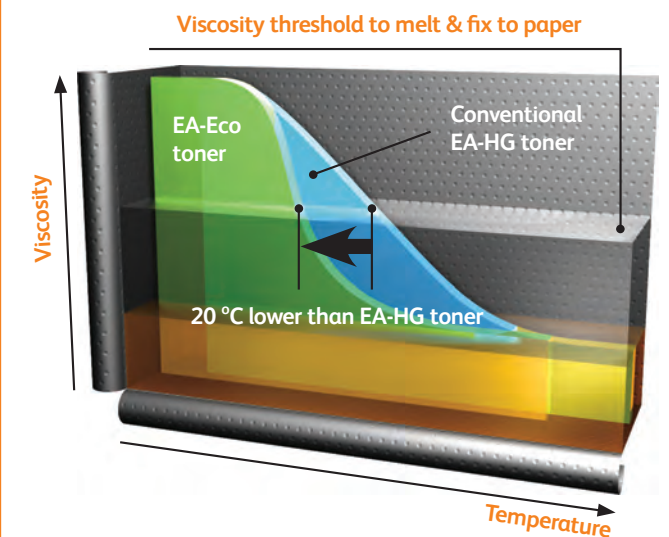
Every unit of ApeosPort-IV C7780/C6680/C5580 series will be bundled with 5 ream of Business+\* paper. Business+ is made from Elemental Chlorine Free pulp produced from well-managed forests that are ISO14001 environmentally accredited. This means that while you print and consume paper, you are also contributing towards environmental forest management, and ensuring that our forests continue to meet the social and ecological needs of our future generations.

\*80 gsm paper

## Cutting-edge technology

**Smart Energy Management Technology.** Our innovative new Smart Energy Management Technology better manages energy usage by only using what is necessary, and activating what is necessary. When you perform a scan, the output device will not be powered up as no printing is required. This not only reduces energy consumption but also allows your devices to recover from sleep mode in just 2 seconds. It's all about using energy only when it's needed – but retaining convenience too.

**EA-Eco Toner.** This Emulsion Aggregation (EA) Ultra Low-Melt toner achieves a fusing temperature more than 20°C lower than conventional EA toner, reducing power consumption by up to 40% during fusion, as well as achieving a brilliant glossy output even on ordinary paper.



**Power LED Scanner.** The LED technology used as the light source for image scanning consumes less energy and gives you ultra-quiet operation. Since the LED lamps light up immediately, the first copy out time has been reduced to less than 7 seconds.

# Scale up your productivity.

Work faster and more efficiently with powerful performance and convenience features that simplify document management

**Get fast results.** Experience high output performance with print speeds up to 70 ppm in colour and up to 75 ppm in black and white, with a first-page-out-time as fast as 4.1 seconds.

**Maximise uptime.** Generous, scalable paper handling options support media capacities up to 5,260 sheets in a wide variety of media sizes, types and weights.

**User intervention is kept to a minimum.** Two black toner cartridges means toner lasts longer and can be replaced on the fly.

**Full range of scanning solutions.** Simply scan your hard copy documents and get searchable digital files\* that can be automatically shared via email or network folder, or stored on the device or any USB memory device for true portability.

\*Optional Searchable PDF Kit is required

**With LDAP integration standard.** Secure authentication, administration and access to your corporate directory is simplified.

**Reduce network traffic.** Access scanned documents faster with advanced file compression techniques that dramatically shrink file sizes, reduce storage space requirements and cut down on document traffic on your network\*.

\*Optional High Compression Image kit is required

**Configure once, apply fleet wide.** Fuji Xerox multifunction device configurations can be cloned and distributed to all similar multifunction devices on your network, eliminating the need to configure and manage each device individually.

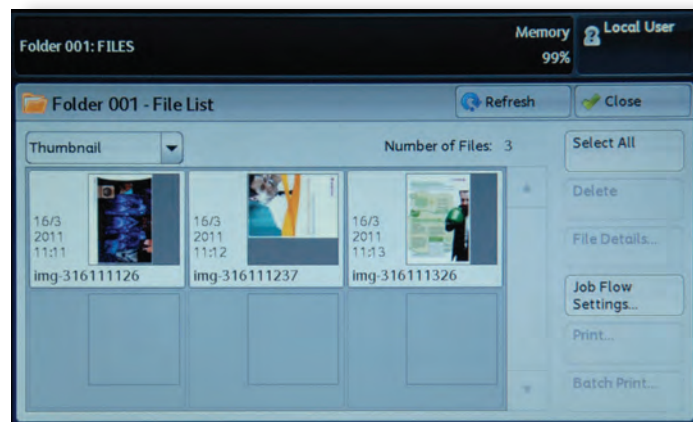
**Integrates easily** with 3rd-party workflow applications to extend and fine-tune capabilities such as accounting and document management.

**Walk-up simplicity.** Print from and scan to any USB memory device for faster document delivery when you're not at your computer\*.

\*Optional Scan to USB Kit and/or USB Media Print Kit is required



**Store frequently printed documents.** Increase employee efficiency with robust scanning features that store frequently used forms and documents in the device's hard drive for subsequent reprinting.



**Scan to Home.** As easy as copying, documents can be scanned directly to a pre-designated folder on a registered PC for immediate use or archived for later retrieval\*.

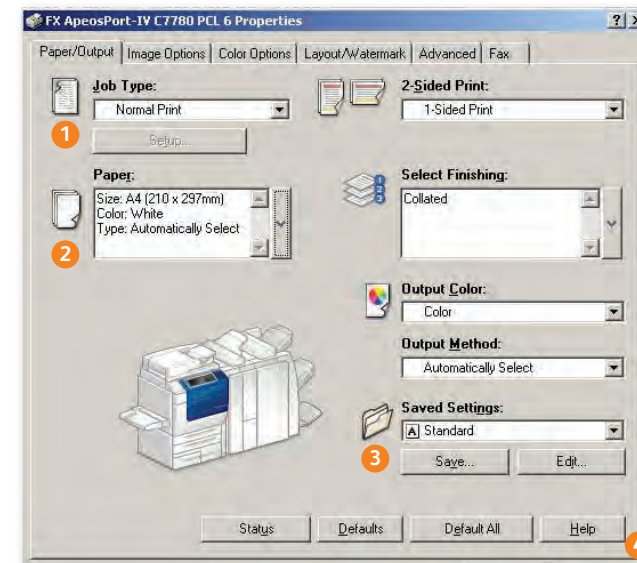
\*External authentication is required.

**To speed up copying and faxing** an express (simple) copy and fax feature is available that displays only the basic settings. This is provided in addition to the normal features.

**Reduce costs by printing multiple pages per sheet (N-Up)** which is especially useful when printing Microsoft PowerPoint presentations, MS Word documents, PDFs — and even web pages.

**WHQL certified PCL and PostScript\* print drivers** provide a consistent, easy-to-use interface for end-users that can greatly simplify your printing operations.

\* Optional Adobe PostScript 3 Kit required



- 1 Drop down menu for secure print, fax, save to mailbox and more
- 2 Paper selection summary window
- 3 Favourite print settings
- 4 Help function for feature descriptions and driver assistance

**Single print driver works with all printers.** The Xerox Global Print Driver® supports Fuji Xerox and non-Xerox devices on the network. Never have to redeploy another print driver, saving hours of downtime.

**Bi-Directional status.** Fuji Xerox print drivers integrate powerful bi-directional tools that offer real-time status and automatically detect and install new device options such as paper trays and finishers.

**Customise your print driver settings** for economy and efficiency. For example, set two-sided printing or choose N-up for printing multiple pages on a single sheet as your default.

**Save time by storing the settings** of frequently printed documents as favourites in your print driver. Settings include paper sizes, covers, duplexing, finishing and more.

**Advanced, paperless faxing.** Your users can send and receive faxes without leaving their desks. LAN fax sends faxes directly from applications on your desktop. Plus, fax-forwarding lets you forward incoming faxes to an email address, folder or network connected PC for retrieval and further distribution on demand.

**Incoming faxes reported by e-mail.** For a paperless fax option, fax jobs can be reported to five pre-registered users when the document is stored in the mailbox.

**Block unwanted (junk) fax numbers.** This allows you to block specified fax numbers, so it does not print faxes received from those numbers in the future.