

RICOH

Aficio

MP 4002 / MP 5002

Upgradeable B&W Digital Copier

Copier

MP 4002SP / MP 5002SP

Digital B&W Multifunction Device

Copier Printer Scanner



Aficio™

MP 4002SP

40
ppm

B/W

Aficio™

MP 5002SP

50
ppm

B/W

Smart solutions for powerful productivity

In the modern workplace you expect more from yourself and more from your technology. Ricoh meets these evolving expectations with the all-in-one Aficio™ MP 4002/MP 4002SP/MP 5002/MP 5002SP. They streamline your workflows with outstanding black and white printing, copying, faxing and colour scanning for MP 4002SP/MP 5002SP. Then they give you the customised innovation you need to achieve your personal objectives and meet user requirements.

- User-friendly design
- Customisable per user
- Innovative functions
- Advanced security



Secure and user-friendly document management systems

All-round usability for all-round productivity



Intuitive operation panel

A customisable operation panel displays your personal home screen with your own preferences and settings. The home button returns you to the home screen for fast access to the functions you need. Integrated SD/USB slots lets you work directly from an external source. Individual ergonomics are secured with the tiltable panel.



Enhanced internal controller

Quota Settings per user group or user allow you to manage operation cost of the device. Pairing high throughput to sustainability, the controller also features an Eco-Friendly indicator that shows the paper settings history for more efficient usage. The USB/SD slots permit easy printing of PDF, JPEG and TIFF files.



Maximum security

Managing security of your information, the Copy Control function prevents unauthorised copying of documents. Enhanced encryption (AES256bit, SHA2) for scanning and hard disk security, further add to safeguarding your documents. Secure scanning to Web Mail via SMTP with encrypted SSL add another layer of device security.



Reinforced paper handling

Eliminate outsourcing costs by printing envelopes with your company name and address on. The paper tray carries an increased load of up to 216 g/m².

New quality and convenience



Inspired design

The dual-colour design concept promotes intuitive usability, with frequently used parts rendered in dark grey. The new compact cube design provides flexibility for all office spaces and sizes. Attractive and easy to use menus appear on a large LCD operation screen.

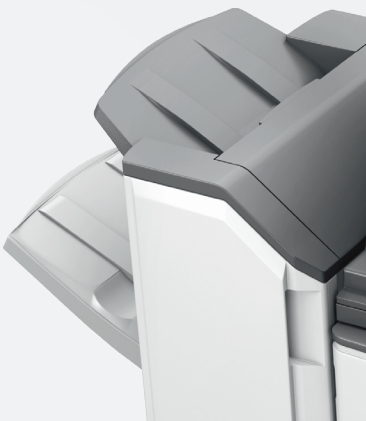
Scanning and faxing

Share and archive high quality documents with colour scanning (MP 4002SP/MP 5002SP) to e-mail, folder and USB. Remote Fax allows multiple users to send and receive faxes on a single network. This eliminates the cost of maintaining multiple fax lines.



Professional inline finishing

Produce attractive documents using a full complement of finishing choices. 1,000-sheet and 3,000-sheet staple finishers are available as well as a 2,000-sheet booklet finisher. Add a punch unit to create 2- or 4-hole punched documents ready for insertion in binders. No more outsourcing is required for your essential documents.



Go with the workflow



Real innovation

Mobile employees benefit from a Browser Unit option that makes it easy to print timetables, tickets and manuals directly from the internet. Scheduled Print delays larger jobs until after office hours while Auto Job Promotion puts error jobs on hold while you print subsequent jobs.

External USB keyboard support

A Windows OS compatible external USB keyboard can be attached and used in place of the soft keyboard. The external USB keyboard connects to the USB port on the operation panel or the USB port on the back of the controller board. This saves time when using the MFPs to scan and index documents for electronic document management (EDM) or archiving.



User-friendly management

Administrators will enjoy the intuitive tools for system management, device monitoring, troubleshooting and other tasks. Settings can be exported to other Ricoh MFPs in the same network which have the same options installed. Configure system settings, address books and more with Web Image Monitor. You will be up and running in no time.

A complete solution

Extended capabilities

Innovative software options enhance the document environment. Streamline NX is an integrated suite of document management applications for control over the entire document workflow. This includes secure access to the MFP, centralised control and output management. For specific functionality of our integrated suite, the components of the suite are also available.



Secure and intelligent workflows

Secure printing is provided by Enhanced Locked Print NX: only the owner can collect his/her prints once logged in. To simplify login at the MFP our Card Authentication Package (CAP) can utilise company access cards. GlobalScan NX provides intelligent scanning options to scan directly to the desired location. @Remote collects operational data so your output devices can be managed more efficiently.

Environmentally responsible

Ricoh products have eco-friendly and money saving features such as fast duplex printing and copying, ultra low sleep mode and increased toner yield. This saves paper, time and energy, while reducing waste and costs. Ricoh products are also Energy Star compliant. This means less CO2 is produced in providing the energy needed to run Ricoh devices.



Critical capabilities for business communications



- 1** Easy access & intuitive operation via the colour LCD panel
- 2** 100-sheet Auto Reverse Document Feeder to efficiently handle one- and two-sided originals
- 3** Standard 2 x 550-sheet paper trays to omit frequent refills and stay productive at all times
- 4** Standard 100-sheet bypass tray to take advantage of a wide range of paper sizes and types
- 5** Optional 2 x 550-sheet paper trays which offer you a choice of multiple paper sources on
- 6** 1,200-sheet side large capacity tray to increase your office productivity
- 7** 2,000-sheet booklet finisher & several punch kits for an entire range of finishing possibilities
- 8** 125-sheet one-bin tray to separate output & make it easier to retrieve your documents

MP 4002/MP 4002SP/MP 5002/MP 5002SP

MAIN SPECIFICATIONS

Aficio®

GENERAL

Warm-up time:	15/19/15/19 seconds
First output speed:	4.1/4.1/3.5/3.5 seconds
Continuous output speed:	40/40/50/50 pages per minute
Memory:	512 MB/1 GB/512 MB/1 GB (Standard)
Hard disk drive:	128 GB (Standard)
Dimensions (W x D x H):	670 x 682 x 895 mm
Weight:	97 kg
Power source:	220 - 240 V, 50/60 Hz

COPIER

Copying process:	Twin laser beam scanning and electro-photographic printing
Multiple copying:	Up to 999 copies
Copy resolution:	600 dpi
Zoom:	From 25% to 400% in 1% steps

PRINTER (OPTIONAL FOR MP 4002/MP 5002)

Printer language:	Standard: PCL5e, PCL6, PDF Option: Adobe® PostScript® 3™, IPDS
Print resolution:	300 dpi, 600 dpi
Interface:	Bi-directional IEEE 1284, Wireless LAN (IEEE 802.11a/b/g), Bluetooth, Gigabit Ethernet
Network protocol:	TCP/IP (IP v4, IP v6), IPX/SPX
Windows® environments:	Windows® XP, Windows® Vista, Windows® 7, Windows® Server 2003, Windows® Server 2008, Windows® Server 2008R2
Mac OS environments:	Macintosh OS X v10.2 or later
UNIX environments:	UNIX Sun® Solaris, HP-UX, SCO OpenServer, RedHat® Linux, IBM® AIX
Novell® Netware® environments:	v6.5
SAP® R/3® environments:	SAP® R/3®

SCANNER (OPTIONAL FOR MP 4002/MP 5002)

Scanning speed:	Full colour: Maximum 31 originals per minute (MP 4002SP and MP 5002SP only) B/W: Maximum 61 originals per minute
Scanning resolution:	Maximum: 600 dpi TWAIN: 1,200 dpi
Original size:	A3, A4, A5
File format:	Single page TIFF, Single page JPEG, Single page PDF, Single page High compression PDF, Single page PDF-A, Multi page TIFF, Multi page PDF, Multi page High compression PDF, Multi page PDF-A
Bundled drivers:	Network TWAIN
Scan to e-mail:	SMTP, POP, IMAP4
Scan to folder:	SMB, FTP, NCP (option)

FAX (OPTIONAL FOR MP 4002/MP 4002SP/MP 5002/MP 5002SP)

Circuit:	PSTN, PBX
Compatibility:	ITU-T (CCITT) G3
Resolution:	8 x 3.85 line/mm, 200 x 100 dpi
Transmission speed:	2 second(s) (200 x 100 dpi, JBIG)
Modem speed:	Maximum: 33.6 Kbps
Scanning speed:	0.9 second(s)
Memory capacity:	Standard: 12 MB Maximum: 44 MB (option)

PAPER HANDLING

Recommended paper size:	A3, A4, A5, B4, B5
Paper input capacity:	Maximum: 4,400 sheets
Paper output capacity:	Maximum: 3,625 sheets
Paper weight:	52 - 220 g/m ²

ECOLOGY

Power consumption:	Maximum: 1.55 kW Low power mode: 102/102/110/112 W/h Ready mode: 157/159/166/172 W/h Sleep mode: 1.2/2.9/1.1/2.9 W TEC (Typical Electricity Consumption): 2.87/2.93/3.49/3.47 kW/h
--------------------	--

SOFTWARE

Standard:	SmartDeviceMonitor™, Web SmartDeviceMonitor™, Web Image Monitor
Optional:	GlobalScan NX, Card Authentication Package, Unicode Font Package for SAP, Remote Communication Gate S Pro

OPTIONS

Platen cover, 2 x 550-sheet paper tray, 1,200-sheet side large capacity tray, 2,000-sheet large capacity tray, Bridge unit, 1,000-sheet finisher, 3,000-sheet finisher, 2,000-sheet booklet finisher, Punch kits, Internal shift tray, One-bin tray, Side tray, Hard Disk Drive, RAM, VM Card, Netware, Browser unit, Counter interface, File format converter, Key counter bracket, Card reader bracket, Copy Data Security Unit, Fax board, Fax Connection Unit, Fax marker, 2nd Super G3 port, Low cabinet, Data Overwrite Security Unit, Printer/Scanner unit.

For availability of models, options and software, please consult your local Ricoh supplier.



RICOH

RICOH HONG KONG LIMITED

21/F, One Kowloon, 1 Wang Yuen Street, Kowloon Bay, Hong Kong
Customer Service Hotline: (852) 2833 1111 Fax: (852) 2833 1909
http://www.ricoh.com.hk

Macau Branch

Alameda Dr. Carlos d'Assumpcao, 255
Edf. China Civil Plaza, 7 Andar (C,D), Macau
Tel: (853) 2833 0066 Fax: (852) 2833 0055



ISO9001 certified, ISO14001 certified

All brand and/or product names are trademarks of their respective owners. Specifications and external appearance are subject to change without notice. The colour of the actual product may vary from the colour shown in the brochure. The images in this brochure are not real photographs and slight differences in detail might appear.

Copyright © 2012 Ricoh. All rights reserved. This brochure, its contents and/or layout may not be modified and/or adapted, copied in part or in whole and/or incorporated into other works without the prior written permission of Ricoh.