

ApeosPort

C5570

C4470

C3370

C3371

C2270

FUJI xerox 

ApeosPort-IV

C5570 / C4470 / C3370 / C3371 / C2270

Digital Colour Multifunction Device

Colourful innovation



ApeosPort-IV C5570 / C4470 / C3370 / C3371 / C2270 Multifunction Devices

Print. Copy. Scan. Fax. Innovation that drives document production to a new level. Breakthrough technologies deliver superb colour speed, better reliability, easy-to-use advanced features and environmentally conscious engineering.

Fuji Xerox's Apeos iiX (Apeos Internet Integration based on XML and SOAP) is a software platform inside the ApeosPort-IV C5570 / C4470 / C3370 / C3371 / C2270 multifunction devices that can be customised to meet your specific functional requirements¹. By connecting several business critical applications, you can increase staff productivity, as well as improve business and environmental efficiencies.

¹Optional. Fuji Xerox's development team provides a range of customisation services to tailor applications to address unique needs.

Features at a glance

- Print, copy, scan and optional faxing
- Print up to 55 ppm black and white, 50 ppm colour
- True 1,200 x 2,400 dpi print resolution
- Intuitive, easy-to-use colour user interface
- Security features for demanding office environments
- High impact colour with built-in control and accounting features



Copy



Print



Scan



Email



Fax



Finishing

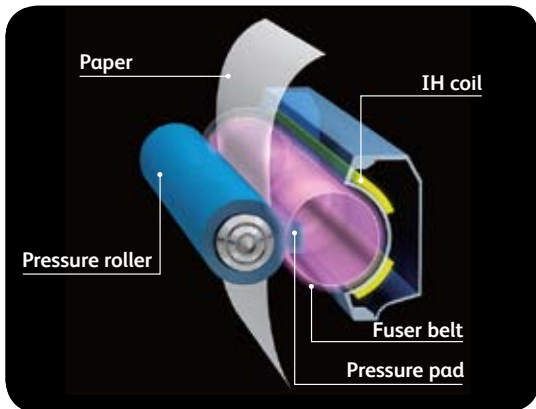


ApeosPort-IV C5570 with Tandem Tray Module and optional Booklet Finisher-C1

Revolutionary environmental technologies

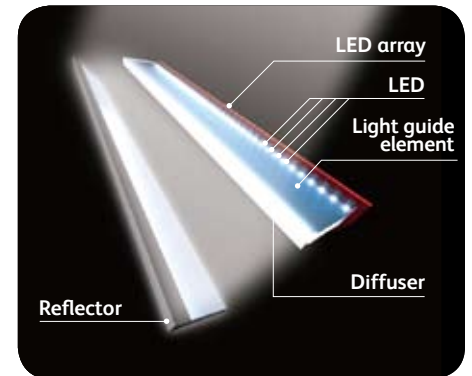
Designed with the environment in mind, the ApeosPort-IV C5570 / C4470 / C3370 / C3371 / C2270 conserves precious resources without sacrificing performance or quality.

IH Fuser



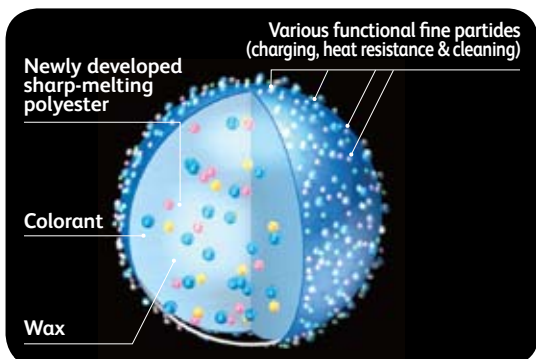
This newly developed Induction Heating Fusing Technology incorporates a thin, non-magnetic metal as the heating layer inside the fuser belt which enables greater energy efficiency. With this new technology, the fusing unit does not require pre-heating and doesn't consume power when the machine is in standby mode. As a result, a fusing unit with the world's quickest start-up time of only 3 seconds, providing Fuji Xerox with a tremendous competitive edge.

High-Intensity White LED



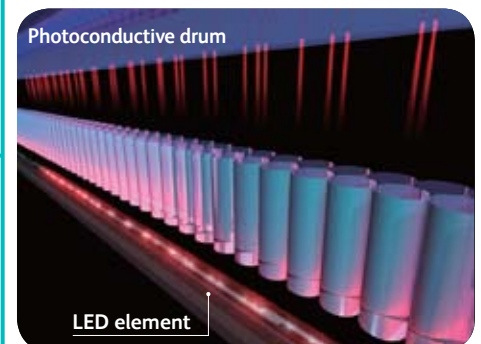
For the first time, Fuji Xerox is using LED (light emitting diode) as the light source for image scanning. This enables brightness that is 1.5 times greater than xenon lamps used in conventional devices and reduces the power consumption by 70%, while achieving greater scanning precision and speed.

EA-Eco toner



EA-Eco toner has been adopted in products for office use. Fusing temperature of the EA-Eco toner is more than 20°C lower than that of conventional toners, cutting power used by around 15%.

LED Printhead "DELICIS"



Fuji Xerox has developed a high-precision, LED print head technology "DELICIS" (Digitally Enhanced Lighting Control Imaging System) that achieves an output resolution of 1,200 x 2,400 dpi that is equivalent or even superior to that produced by a conventional laser raster output scanner (ROS) system. LED print head technology makes it possible to build even smaller devices and reduces power consumption by 45%.



Enjoy outstanding reliability and convenience

New advances in Fuji Xerox technology create an extremely reliable print engine, with additional design features focused on a great user experience.

Smaller overall footprint. Thoughtful engineering delivers more functionality while taking up less space. The compact new imaging system lets you add the integrated Finisher-A1 (stapler) without increasing the device footprint ².

² AP-IV C3370 / C3371 / C2270 only.

High-capacity paper trays. Up to 5,120 sheets mean fewer trips to load paper, especially during long print jobs. ApeosPort-IV C5570 / C4470 / C3370 / C3371 / C2270 can be configured with the following tray options:

- One Tray (A5 to A3) plus Three Tray Module (A5 to SRA3)
- One Tray (A5 to A3) plus Tandem Tray Module (Tray 2: A5 to SRA3, Tray 3 & 4: A4 only)

Plus

- An optional 2,030 sheet High Capacity Feeder can also be added to enable longer uninterrupted job runs

Professional finishing options. Create professional presentations and attractive manuals or proposals. This range of optional finishers gives you efficient, finish-on-demand versatility. These advanced finishers feature stapling, hole punching, saddle stitching and many other finishing tasks.

New design, colour user interface is an 8.5-inch WVGA colour TFT screen that provides a high-precision display using colourful icons and larger buttons. The user-friendly layout allows users to complete a job hassle-free with smooth left to right control panel operation.



Configuration Options



¹Non-Booklet Finisher-C1 is also available.



Advanced scanning

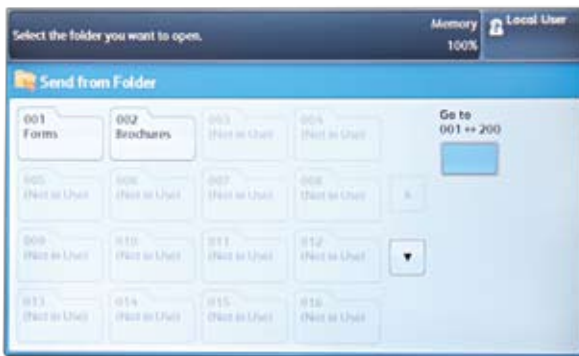
Now it's easier to bring paper documents into the network, with the sophisticated scanning tools you'll find in these leading-edge multifunction devices.

Cutting-edge scanning functionality. Increase efficiency with Scan to Email for quick document distribution to multiple email addresses, Scan to Folder to store on the device and Scan to Home to store on a personal directory. Plus Scan to Network Folder or FTP.

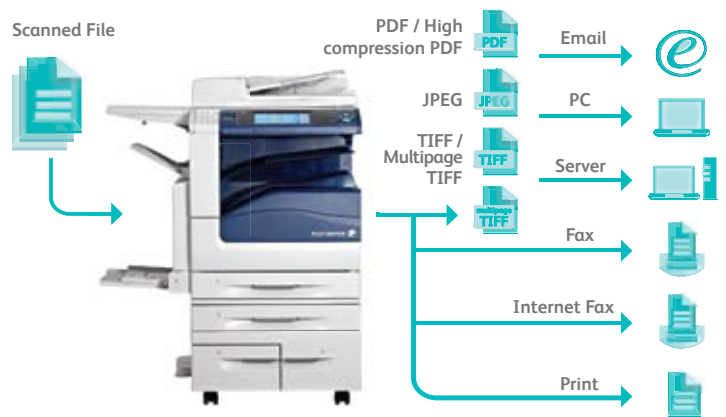
Create searchable PDF files at the device for easy archiving, organising, searching and sharing. Creating a text searchable PDF file is as easy as choosing a file format when programming a scan job – it can even be designated to the default format¹.

¹ Optional Searchable PDF Kit and High Compression Image Kit are required.

Store frequently printed documents. Increase employee efficiency with robust scanning features that store frequently used forms and documents in the device's hard drive for subsequent reprinting.



Automatic file distribution. This feature lets you route documents to multiple destinations – email, folders, fax or print – from a single scan, using a pre-set workflow.



Scan to Home. As easy as copying, documents can be scanned directly to a pre-designated folder on an authenticated computer for immediate use or archived for later retrieval.

Light directory access protocol (LDAP) takes the time and effort out of scanning a document to email by providing users with search access to the email address of an intended recipient from the network's address book.

Streamline network traffic and create greater operational efficiency by sending information via a URL link. Send a URL link that brings you directly to a file's location rather than the document itself.

Quickly scan files directly to a USB flash drive through the USB port that is conveniently located on the front of the device². It requires no printer drivers, or even a PC!

² Optional Scan to USB Kit is required.

Efficient data compression. Specific colour scanning is ideal for documents or drawings that have been stamped or highlighted using relatively few colours. It helps to compress the size of these documents (even more than through high compression), providing significantly faster transmission speeds and reducing network load and storage space on network and mail servers.

Highly usable, highly productive

The ApeosPort-IV C5570 / C4470 / C3370 / C3371 / C2270 offer solid performance backed by unprecedented ease of use. User-centric design makes it easy to take advantage of its advanced features.

Print speeds that match the speed of your business. Output colour documents at a fast 25 ppm, 30ppm, 35 ppm, 45 ppm or 50 ppm, depending on the model chosen.

Quick warm-up time of less than 28 seconds means you spend less time waiting for your job to print.

Automatic colour sensing technology. Using built-in image sensing technology, the ApeosPort-IV C5570 / C4470 / C3370 / C3371 / C2270 automatically recognises when colour is used and will capture this information in the device meters.

Compliant to a Gigabit Ethernet environment. The ApeosPort controller supports optional Gigabit Ethernet connections.

To speed up copying an express (simple) copy feature is available that displays only the basic copy settings. This is provided in addition to the normal copy feature.

USB direct printing is possible with the optional USB Media Print Kit. It can save time for users by printing PDF and TIFF files directly from a USB flash memory drive without having to boot up a PC. A perfect solution when the need to print is urgent³.

³ Optional USB Media Print Kit is required.

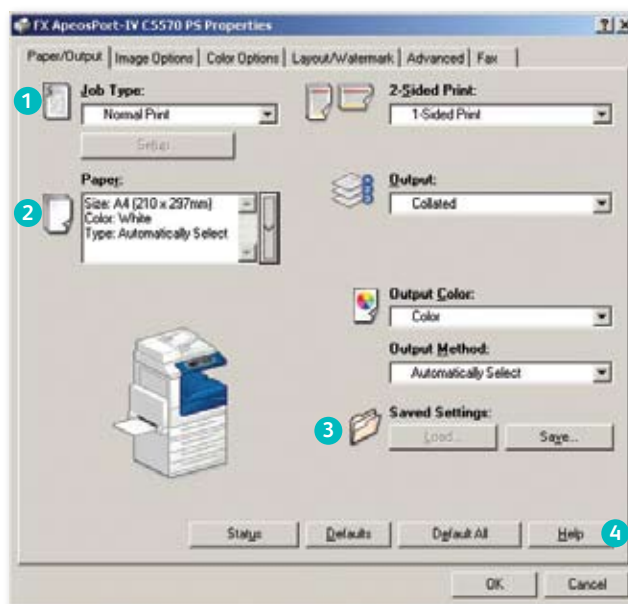


WHQL certified PCL (standard) and PostScript (optional) print drivers provide a consistent, easy-to-use interface for end-users that can greatly simplify your printing operations.

Non-PostScript print driver is now available which allows users to print documents from Mac OS X without adding the PostScript option.

Save time by storing the settings of frequently printed documents as favourites in your print driver. Settings include paper sizes, covers, duplexing, finishing and more.

Advanced copy and print features. Plenty of support for specialised print applications, such as Annotation, Delayed Print and Watermark right from the print driver.



- 1 Drop down menu for secure print, fax, save to mailbox and more
- 2 Paper selection summary window
- 3 Favourite print settings
- 4 Help function for feature descriptions and driver assistance

Extensive fax capabilities

Network Server Fax, Internet Fax enablement (to avoid long distance charges) and Walk-up Fax eliminate the need for a dedicated fax machine.



Innovation that drives document production to a new level

Electronic fax. If there is a concern about faxes getting lost in piles of other documents, this feature eliminates paper wastage and provides peace of mind. It will route incoming faxes to a nominated email address, folder or network connected PC for retrieval and further distribution on demand.

Incoming fax



Restrict users from sending faxes to numbers not listed in your address book. This security feature will help protect the leakage of confidential information and reduce costs by preventing users from using the fax function for non-business related purposes.

Capture and store undelivered faxes sent directly from the device. The fax number can be edited at the user interface and re-sent if required, without rescanning the document(s).

Block unwanted (junk) fax numbers. This allows you to block specified fax numbers, so it does not print faxes received from those numbers in the future.

Control access, manage costs

The ApeosPort-IV C5570 / C4470 / C3370 / C3371 / C2270 put you in control, with some of the most advanced output security features in the industry. And our advanced reporting and management tools help you keep costs down without sacrificing quality.

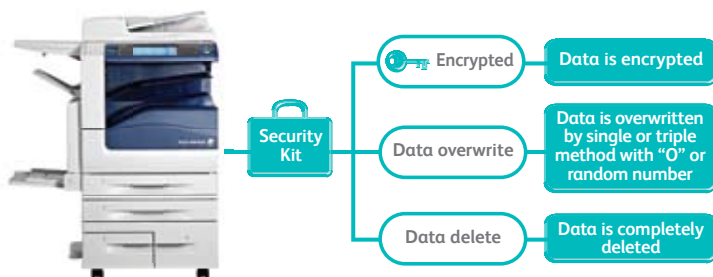
Latest in Internet standards and protocols. ApeosPort-IV C5570 / C4470 / C3370 / C3371 / C2270 multifunction devices support the IPv6 standard, which opens up additional IP addressing opportunities across the Internet and inside enterprise firewalls. IPv6 provides additional network security, better network routing and configuration, and improved support for high volume printing and larger print jobs.

The optional Secure Watermark Kit can help prevent the unauthorised reproduction of sensitive material. Documents featuring this secure watermark cannot be copied, scanned or faxed using similarly equipped devices.

State-of-the-art security standards. The ApeosPort-IV C5570 / C4470 / C3370 / C3371 / C2270 conform to the latest industry standards for network security, supporting IPSec to encrypt document content, SNMPv3 to securely transfer information to users and 802.1x to securely authenticate network devices before allowing document access.

Secure Print helps prevent unauthorised viewers from seeing documents by holding jobs in the print queue until the user is authenticated, eliminating paper wastage and securing confidential information.

Data Security Kit available as an option with ApeosPort devices provides administrators with three security options:



Remote fleet configuration. CentreWare Internet Services allows for simplified device configuration and administration, and lets you easily clone configurations to other similar devices on the network.



- 1 Configure auditoron
- 2 Upload email / fax address books as CSV files
- 3 Monitor paper tray / consumables status
- 4 Monitor job queues
- 5 Submit driverless print jobs

Manage colour printing to minimise costs. Control costs by nominating when colour could be used and by whom. This ensures that colour is available to those individuals who truly leverage its power - such as the sales teams and marketing department.

Manage and track device usage using Xerox Standard Accounting. Device usage reports can be obtained and presented as a CSV file for greater cost control of printing, copying, scanning and faxing.

ApeosWare Management Suite. An optional device management application software which makes it easy for administrators to control device usage; copy, print, fax, scan and colour / black and white per user or group.

Monitor the amount of time each device spends in all power modes – stand-by, energy-saving/low power and sleep with CentreWare Internet Services. The Job Counter Report can also monitor the number of jobs that are printed in duplex or multiple images on one page. These metrics will allow businesses to better manage device performance for increased energy savings.

Fuji Xerox and environmental sustainability

Fuji Xerox technology and services are designed and managed to improve sustainability performance for its customers. Our equipment features environmentally responsible design and energy efficient enhancements.

Our document software and digital technologies help reduce paper wastage and our services enable clients to improve the efficiency of document intensive business processes and optimise their equipment infrastructure to save costs and cut carbon emissions.

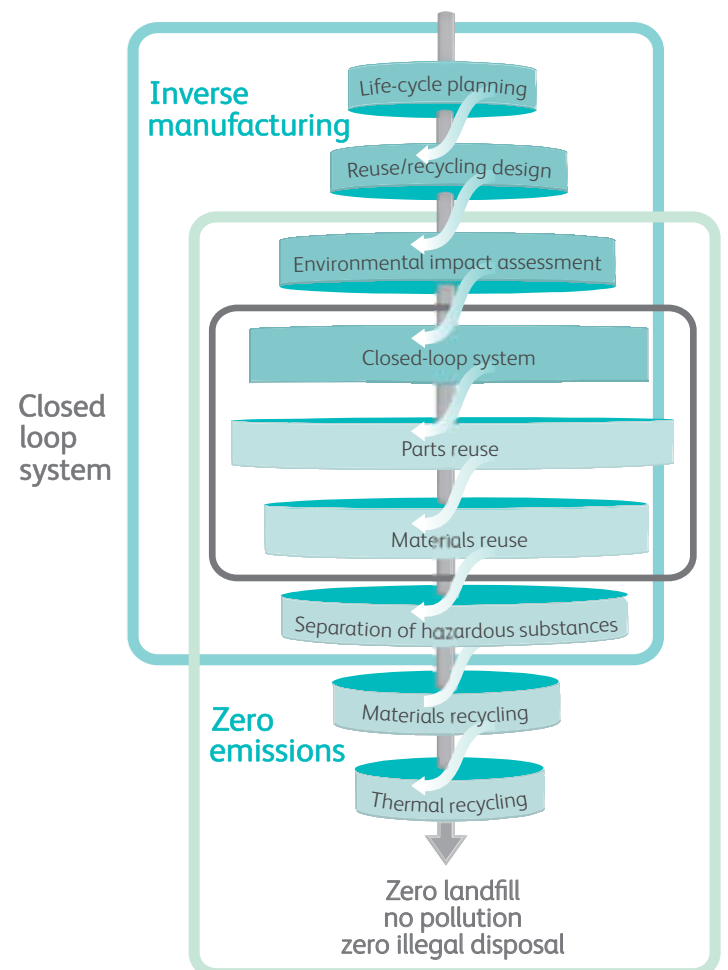
Design for the environment. Every piece of Fuji Xerox equipment is designed with the environment in mind and our achievements include:

- Eliminating the need to use hazardous material such as lead-based solder;
- Enabling low energy consumption during use of the machine;
- Utilising innovative and energy efficient toner;
- Minimising the use of new resources; and
- Facilitating the remanufacture or recycling of used machines and parts at end of life

The Eco Solution. Fuji Xerox has developed a microsite (www.fxap.com.sg/green) to educate customers about using ecologically smart approaches that can help save costs, energy and the environment. By evaluating your current setup and identifying any areas of concern, Fuji Xerox can recommend an efficient workflow solution that will optimise output, IT devices and document management and Print-On-Demand.



A leader in product stewardship. Fuji Xerox was first in the industry with products made from reused components and takes responsibility for all end-of-life products. We achieve over 99% resource recovery from the products returned to us at end of life.



Extending your capabilities with Apeos Solutions

Apeos iiX (Apeos Internet Integration based on XML and SOAP) extends ApeosPort's capabilities beyond those of a regular multifunction device (MFD). Apeos iiX allows users to connect to various web applications and provides a suite of Software Development Kits for the seamless customisation and integration of all business applications with ApeosPort... making it a truly intelligent portal.

Leveraging Fuji Xerox consultancy expertise for greater ROI. To maximise your ApeosPort investment, leverage on Fuji Xerox's comprehensive consultancy expertise to customise the web services available through the Web Browser on your ApeosPort.

Depending on the complexity of your environment and business needs, the Fuji Xerox Business Alliance and Consulting Services (BACS) group provides document consulting, system design, development and project management services to assist you with your integration or customisation requirements.

Our customisation team can re-design your ApeosPort's web browser to display the same "look-and-feel" as your business application. Enjoy true customisation with the flexibility to add company logo, change colours and integrate unique workflows.



Effectively manage printing costs in your office. By seamlessly integrating with Fuji Xerox multifunction devices (MFD's), Equitrac Office® print management solution allows you to track, analyse and allocate costs of printouts sent to a networked printer, copier or MFD.

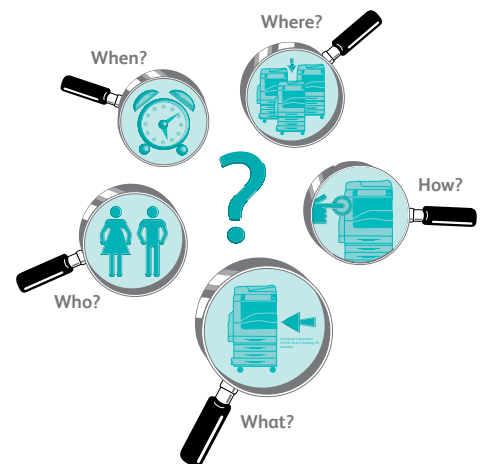


The Follow-You Printing with Secure Document release increases mobility and productivity by allowing your staff to output documents at any networked printer within your office. It enables a secure access by entering a user ID or swiping a card before getting their documents. This means that users can avoid being on guard while waiting for their printouts - letting them make better use of their billable time.

An extensive reporting capability enables traceability of costs within workgroups. It also provides information on which devices are heavily used and breaks down often so you can make informed decisions on deploying your office equipment.

Document security is priority. Fuji Xerox introduces a solution that ensures top security for all your electronic and paper documents. The new ApeosWare Image Log Service (AWILS) Document Security Solution lets you monitor and track any document once it is copied, printed, faxed or scanned.

All documents that are copied, printed, faxed or scanned, are automatically saved as images by ApeosPort. Next, these captured images are seamlessly transferred to a core server with "OCR" technology, and are indexed and stored according to their job information. Should a leak occur, you can trace and locate the disclosed documents as well as the source of the leak including who, where, when, which and how, by performing keywords or content searches of the stored images on the core server. Investigative work that was once tedious and time-consuming now becomes swift and effortless!



Specifications of ApeosPort-IV C5570 / C4470 / C3370 / C3371 / C2270 Series

Copy Function

| | AP-IV C5570 | AP-IV C4470 | AP-IV C3370 | AP-IV C3371 | AP-IV C2270 |
|----------------------------------|--|--|--|--|--|
| Type | Console Type | | | | |
| Memory | 1.5 GB (Max. 2 GB) | | | | |
| HDD | 80 GB (Usable Space: 40 GB) | | | | |
| Scanning Resolution | 600 x 600 dpi | | | | |
| Warm-up Time | 28 sec or less (at room temperature 20°C) 24 sec or less when the main power is on (at room temperature 20°C) | | | | |
| Original Paper Size | Max. 297 x 432 mm (A3, 11 x 17") for both sheet original and book original | | | | |
| Output Paper Size | Max. SRA3 126 x 177" (320 x 449.6 mm), 12 x 18" (304.8 x 457.2 mm), For Bypass Tray, Max. 320 x 482.6 mm Min: A5, For Bypass Tray, Postcard (100 x 148 mm), Envelope (120 x 235 mm) | | | | |
| Output Paper Weight ¹ | Tray: 60 - 256 gsm, Bypass Tray: 55 - 280 gsm, HCF B1: 55 - 216 gsm | | | | |
| First Copy Output Time | 3.7 sec <BW> 5.2 sec <Colour> | 4.4 sec <BW> 5.7 sec <Colour> | 4.9 sec <BW> 6.4 sec <Colour> | 4.9 sec <BW> 6.4 sec <Colour> | 6.6 sec <BW> 8.7 sec <Colour> |
| Continuous Copy Speed | A4: 55 ppm <BW> 45 ppm <BW> 50 ppm <Colour> 45 ppm <Colour> A3: 27 ppm <BW> 22 ppm <BW> 25 ppm <Colour> 22 ppm <Colour> | 45 ppm <BW> 35 ppm <Colour> 20 ppm <BW> 20 ppm <Colour> | 35 ppm <BW> 35 ppm <Colour> 20 ppm <BW> 20 ppm <Colour> | 30 ppm <BW> 30 ppm <Colour> 17 ppm <BW> 17 ppm <Colour> | 25 ppm <BW> 25 ppm <Colour> 14 ppm <BW> 14 ppm <Colour> |
| Paper Tray Capacity | Standard: 2,090 sheets: 500 sheets x 4 Tray + Bypass 90 sheets Optional: HCF B1: 2,030 sheets, Tandem Tray Module: 2,500 sheets Max: 5,120 sheets: 500 sheets + Tandem Tray 2,500 sheets (500 + 867 + 1,133 sheets) + HCF B1: 2,030 sheets + Bypass 90 sheets | | | | |
| Output Tray Capacity | Exit 2 Tray: 250 sheets (A4 LEF), Lower Center Tray: 250 sheets (A4 LEF) | | | | |
| Power Supply | AC 220 - 240 ± 10% / 110 V ± 10%, 10 / 15 A for both 50 / 60 Hz ± 3% | | | | |
| Power Consumption | 2.2 KVA (AC 220 ± 10%) / 2.4 KVA (AC 220 +10%) / 1.65 KVA (110 V ± 10%) In Sleep Mode: 2 W (220 V), 1.5 W (110 V) | | | | |
| Dimensions | W 640 x D 685 x H 1,128 mm (with Automatic Document Feeder) | | | | |
| Machine weight | 136 kg | 136 kg | 133 kg | 133 kg | 133 kg |

¹ Performance may vary for heavyweight, coated and special stocks

Print Function

| | AP-IV C5570 | AP-IV C4470 | AP-IV C3370 | AP-IV C3371 | AP-IV C2270 |
|------------------|---|-------------|-------------|-------------|-------------|
| Type | Built-in Type | | | | |
| Print Resolution | 1,200 x 2,400 dpi, 1,200 x 1,200 dpi | | | | |
| PDL | PCL6, PCL5, Optional: Adobe® PostScript® 3™ | | | | |
| Operating System | Standard: Windows® 2000, Windows® XP, Windows Server® 2003, Windows Server® 2008, Windows Vista®, Windows® XP×64, Windows Server® 2003×64, Windows Server® 2008×64, Windows Vista® ×64, Adobe® PostScript® 3™ (Optional): Windows® 2000, Windows® XP, Windows Server® 2003, Windows Server® 2008, Windows Vista®, Windows® XP×64, Windows Server® 2003×64, Windows Server® 2008×64, Windows Vista® ×64, Mac OS 8.6 / 9.2.2, Mac OS x 10.3.9 10.4.11 (except 10.4.7), Mac OS X 10.5 | | | | |
| Connectivity | Standard: Ethernet 100 BASE-TX / 10 BASE-T, USB 2.0 Optional: Ethernet 1000 BASE-T (Bidirectional Parallel IEEE1284-B) | | | | |

Scan Function

| | AP-IV C5570 | AP-IV C4470 | AP-IV C3370 | AP-IV C3371 | AP-IV C2270 |
|---------------------|--|-------------|-------------|-------------|-------------|
| Type | Colour Scanner | | | | |
| Scanning Speed | BW: 70 ppm, Colour: 70 ppm | | | | |
| Scanning Resolution | 600 x 600 dpi, 400 x 400 dpi, 300 x 300 dpi, 200 x 200 dpi | | | | |
| Connectivity | Standard: Ethernet 100 BASE-TX / 10 BASE-T Optional: Ethernet 1000 BASE-T | | | | |
| Scan Destinations | Scan to Email, Folder, PC / Server (using FTP / SMB protocol) | | | | |

Fax Function (Optional)

| | AP-IV C5570 | AP-IV C4470 | AP-IV C3370 | AP-IV C3371 | AP-IV C2270 |
|--------------------|-------------------------|-------------|-------------|-------------|-------------|
| Send Document Size | Max. A3, 11 x 17" | | | | |
| Transmission Time | Less than 3 seconds | | | | |
| Transmission Mode | G3 | | | | |
| No. of Fax Lines | PBX, PSTN, Max. 3 ports | | | | |

Duplex Automatic Document Feeder

| | AP-IV C5570 | AP-IV C4470 | AP-IV C3370 | AP-IV C3371 | AP-IV C2270 |
|-----------------------|--|--------------------------------|--------------------------------|--------------------------------|--------------------------------|
| Capacity | 110 sheets | | | | |
| Original Paper Size | Max: A3, 11 x 17", Min: A5 | | | | |
| Output Paper Weight | 38 - 128 gsm, In Duplex: 50 - 128 gsm | | | | |
| Feeding Speed (A4LEF) | 55 ppm <BW> 50 ppm <Colour> | 45 ppm <BW> 45 ppm <Colour> | 35 ppm <BW> 35 ppm <Colour> | 30 ppm <BW> 30 ppm <Colour> | 25 ppm <BW> 25 ppm <Colour> |

Descriptions in this material, product specifications and / or appearances are subject to change without prior notice due to improvements. Please note that the product colour appears differently from the actual colour as a result of properties of papers or printing ink. Windows and Windows NT are registered trademarks of Microsoft Corporation. NetWare is a registered trademark of Novell, Inc. in the United States. Macintosh, Mac OS and Ether Talk are trademarks of Apple Computer, Inc. PostScript is a registered trademark of Adobe Systems Incorporated in each country. HP-GL is a registered trademark of Hewlett-Packard Company. Other company names or product names are registered trademarks or trademarks of each company.

Spares for the standard configuration of installed machines is supported for up to 7 years from the date of the end of machine production.

Finisher-A1 (Optional)²

| | AP-IV C5570 | AP-IV C4470 | AP-IV C3370 | AP-IV C3371 | AP-IV C2270 |
|---------------------------|---|-------------|-------------|-------------|-------------|
| Paper Size / Paper Weight | Max: A3, 11 x 17", Min: Postcards (100 x 148 mm), 55 - 220 gsm | | | | |
| Stacker Capacity | [Without Staples] A4: 500 sheets, B4: 250 sheets, A3 or larger: 200 sheets, Mixed Size Stacking: 250 sheets, [With Staples]: 30 sets | | | | |
| Staple Capacity | A4: 50 sheets (Max. 90 gsm), B4 or larger: 30 sheets (Max. 90 gsm) | | | | |
| Paper Size | Max: A3, 11 x 17", Min: B5 LEF | | | | |
| Position | Single (Front / Angled Staple) | | | | |

² The Optional Finisher-A1 cannot be installed on ApeosPort / DocuCentre-IV C5570 / C4470

Finisher-B1 (Optional)

| | AP-IV C5570 | AP-IV C4470 | AP-IV C3370 | AP-IV C3371 | AP-IV C2270 |
|--------------------------------|---|-------------|-------------|-------------|-------------|
| Paper Size / Paper Weight | Max: A3, 11 x 17", Min: B5, 55 - 220 gsm | | | | |
| Stacker Capacity | [Without Staple] A4: 2,000 sheets, B4: 1,000 sheets, Mixed Size Stacking: 300 sheets [With Staples] A4: 100 sets or 1,000 sheets, B4 or larger: 75 sets or 750 sheets Booklet / Fold: 50 sets or 600 sheets, Fold: 500 sheets | | | | |
| Staple Capacity | 50 sheets (Max. 90 gsm) | | | | |
| Paper Size | Max: A3, 11 x 17", Min: B5 LEF | | | | |
| Position | Single (Front / Angled, Back / Straight), Dual (Parallel) | | | | |
| Punch ³ | | | | | |
| Paper Size | A3, 11 x 17", B4, A4, A4 LEF, Letter (8.5 x 11"), Letter (8.5 x 11") LEF, B5 LEF | | | | |
| Number of Holes | 2 Holes or 4 Holes, or US 2 or 3 Holes ⁴ | | | | |
| Paper Weight | 55 - 200 gsm | | | | |
| Booklet Finishing ⁵ | | | | | |
| Capacity | Booklet: 15 sheets, Fold: 5 sheets | | | | |
| Paper Size | Max: A3, 11 x 17", Min: A4, Letter (8.5 x 11") | | | | |
| Paper Weight | Saddle-Stapling: 64 - 80 gsm, Half-Folding: 64 - 105 gsm | | | | |

³ Optional Finisher-B1 Punch Kit is required

⁴ Can equip either one of 2 / 4 Hole Punch or US 2 / 3 Hole Punch for Finisher-B1

⁵ Optional Booklet Maker Unit is required

Booklet Finisher-C1 (Optional)

| | AP-IV C5570 | AP-IV C4470 | AP-IV C3370 | AP-IV C3371 | AP-IV C2270 |
|---------------------------|---|-------------|-------------|-------------|-------------|
| Paper Size / Paper Weight | Exit / Finisher Tray: Max. SRA3, 12 x 19", Min: B5, 55 - 220 gsm Booklet Tray: Max. SRA3, 12 x 18", Min: A4, Letter (8.5 x 11"), 64 - 90 gsm | | | | |
| Stacker Capacity | Exit Tray: 500 sheets (A4), Finisher Tray: [Without Staple] A4: 1,500 sheets, B4 or larger: 1,500 sheets, Mixed Size Stacking: 300 sheets [With Staple] A4: 200 sets or 1,500 sheets, B4 or larger: 100 sets or 1,500 sheets, Booklet Tray: 20 sets | | | | |
| Staple Capacity | 50 sheets (Max. 90 gsm) | | | | |
| Paper Size | Max: A3, 11 x 17", Min: B5 | | | | |
| Positions | Single (Front / Back / Angled), Dual (Parallel) | | | | |
| Punch | | | | | |
| Paper Size | A3, 11 x 17", B4, A4, A4 LEF, Letter (8.5 x 11"), Letter (8.5 x 11") LEF, B5 LEF | | | | |
| Number of Holes | 2 or 4 holes (Option US 2 or 3 holes) | | | | |
| Paper Weight | 55 - 220 gsm | | | | |
| Booklet Finishing | | | | | |
| Capacity | Saddle-Stapling: 15 sheets, Half-Folding: 5 sheets | | | | |
| Paper Size | Max: A3, 12 x 18", Min: A4, Letter (8.5 x 11") | | | | |
| Paper Weight | Saddle-Stapling: 64 - 90 gsm, Half-Folding: 64 - 105 gsm | | | | |

High Capacity Feeder (Optional)

| | AP-IV C5570 | AP-IV C4470 | AP-IV C3370 | AP-IV C3371 | AP-IV C2270 |
|---------------------------|---|-------------|-------------|-------------|-------------|
| Paper Size / Paper Weight | A4 LEF, 8.5 x 11" LEF, B5 LEF, 55 - 216 gsm | | | | |
| Capacity | 2,030 sheets (80 gsm) | | | | |

Customer Expectation Document (CED)

For detailed product specifications, optimum performance parameters and service clearances refer to the Customer Expectation Document.



Reproduction Prohibitions Please note that reproduction of the following is prohibited by law: Domestic and overseas bank notes and coins, government-issued securities, national bonds and local bond certificates. Unused postage stamps and post cards. Certificate stamps stipulated by law. The reproduction of works for copyright purposes (literary works, musical works, paintings, engravings, maps, cinematographic works, photographic works, etc.) is prohibited except when they are reproduced personally, at home or within limited range according to the above. This product is equipped with an anti-counterfeit feature. This feature is not intended to prevent illegal reproduction. Be extremely careful about the management of equipment used.

For Your Safe Use
Before using the product, read the Instruction Manual carefully for proper use. Use the product with an appropriate adequate power source and voltage displayed. Be sure to establish a ground. In the case of a failure or short circuit, an electric shock may result.

For more information or detailed product specifications, call or visit us at
Fuji Xerox Asia Pacific 80 Anson Road,
 #01-00, Fuji Xerox Tower Singapore 079907
 Tel.xxxxxxx Fax.xxxxxxx

<http://www.fxap.com.sg>

